



RmCU V 2.3

Datasheet Remote Control Unit RmCU
(07/2008)



The Remote Control Unit RmCU is designed as a data logger with optional direct connection to a central office software. It monitors indicated values over internal and external interfaces. There is an alarm- and performance- management integrated. For special applications the hard and software can be easily modified.

With the integrated GSM/GPRS capable modem it allows low cost data transmission to a monitoring software. Thus, a powerful alarm and monitoring system can be built up, even for moving objects with the optional GPS interface!

Interfaces:

Available Interfaces:


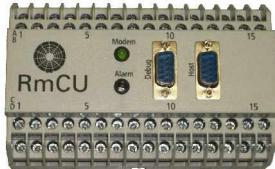

- 3 RS-232
 - 1 internal for GSM/GPRS modem
 - 2 external
- Ethernet 10/100 MBit
- I²C
- JTAG
- 2 USB- Host (V 1.1; V 2.0 compatible)
- USB- Client (V 1.1; V 2.0 compatible)
- 4 digital inputs (optocoupled)
- 4 digital outputs (optocoupled)
- 8 digital IOs (configurable as inputs or outputs)

Possible Interface Extensions:

- SD Card
- WLAN, Bluetooth
- IP-Camera
- GPS-Receiver for position control
- S0-Bus
- M-Bus
- Modbus
- RS422/485
- CAN Open
- Profibus DP
- SPI
- Analog Inputs (A/D converter)
- relay outputs
- more digital inputs or outputs
- more on request



Housing Options:

	Standard box	DIN rail housing	IP65 case
			
<i>Mechanical data:</i>			
	130 x 105 x 35 mm ³	140 x 90 x 60 mm ³ (add. too standard case)	200 x 120 x 90 mm ³
<i>Environmental data:</i>			
- Op. temperature ** no modem integrated ** with modem integr.		-20°C to +65°C -20°C to +55°C	
- Humidity		95% r. H. non cond.	

Further technical data:

Performance data:

CPU: Marvell (Intel)
 PXA 255, 400 MHz
 SDRAM: 64 MB
 FLASH: 32 MB

Power supply requirements:

Basic: 3 W typ. (+8 to +32 VDC)
 GSM modem: 3 W; 7 W peak

Front panel connectors and LEDs

- SMA connector (for external antenna)
- LED, indicating state of GSM modem
- LED, indication power and alarm state of RmCU
- high pin count connectors for power supply, different IO's and interfaces

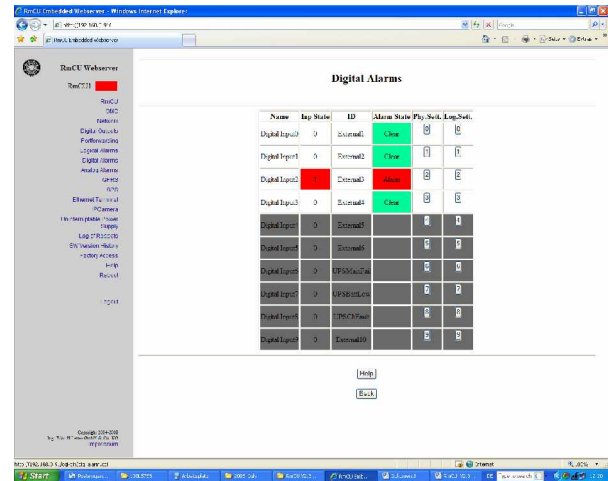
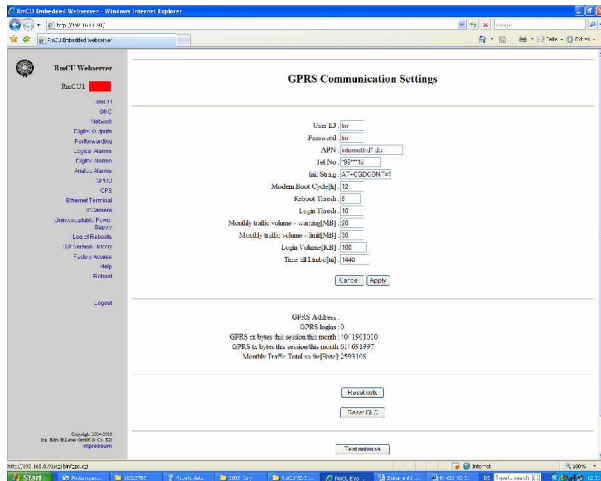
Back panel connectors and LEDs

- USB-connector
- LAN connector
- SIM-Card holder



Local Configuration:

- WEB- interface via USB or Ethernet



OS:

- Linux Kernel 2.6

Special Features:

- Hardware WatchDog for RmCU, and the integrated GSM- Modem, USB power down through RmCU reset
- internal temperature sensor
- internal EEPROM for serial number, SW licence and version
- internal real time clock with battery buffer

Options:

- Fully integrated Siemens MC45/46, MC55/56 or MC63/65/75 supporting GSM850/900/1800/1900) or GSM-R, according to the modem.
- Up to 8 analog Inputs in 12 Bit resolution with selectable measuring range (0 to 2 V, 0 to 5 V, 0 to 10 V, 0 to 20 mA, PT 100/500/1000)
- UPS (external housing)
- GPS- Receiver
- external SIM card holder