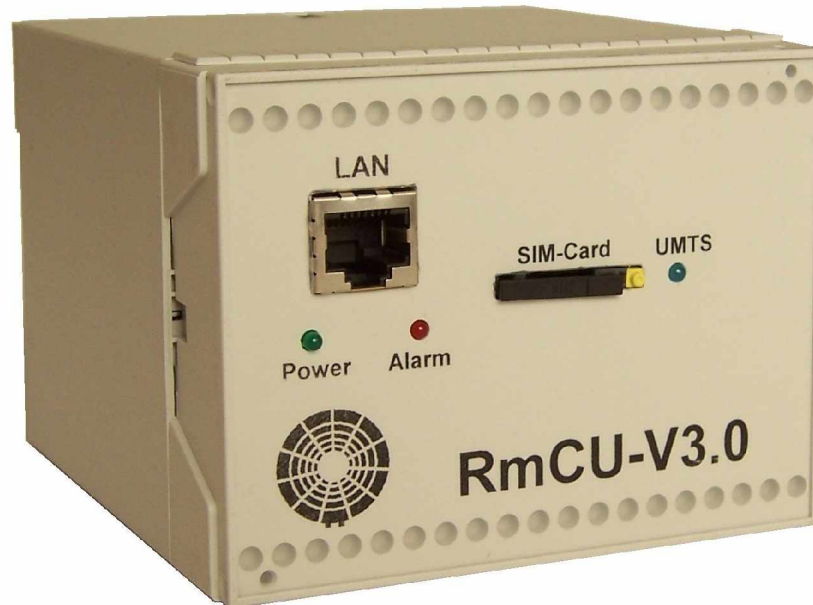




RmCU V 3.x

Datasheet Remote Control Unit RmCU
(07/2008)



RmCU V 3.0 is a high performance Remote Control Unit for extensive process control applications. With the integrated high speed UMTS/HSDPA Modem it can be used for broadband connections or as an high performance IP- Router . The CPU clock frequency from up to 520 MHz allows short reaction times to external events.

Interfaces:

Available Interfaces:

- internal RS232 for GSM/GPRS/UMTS modem
- external serial interface, configurable as RS232 or RS485)
- Ethernet 10/100 MBit
- I²C
- SPI
- 4 digital inputs (optocoupled)
- 4 digital outputs (optocoupled)
- 8 digital IOs (configurable as inputs or outputs)

Possible Interface Extensions:

- SD Card or CF-Card
- WLAN
- Bluetooth
- IP-Camera
- GPS-Receiver for position control
- USB
- S0-Bus
- M-Bus
- Modbus
- CAN Open
- Profibus DP
- Analog Inputs (A/D converter)
- relay outputs
- more digital inputs or outputs
- more on request



Housing Options:

	Standard box	DIN rail housing	IP65 housing
<i>Mechanical data:</i>			
	130 x 105 x 35 mm ³	100 x 75 x 110 mm ³	200 x 120 x 90 mm ³
<i>Environmental data:</i>			
- Op. temperature ** no modem integrated ** with modem integr.		-10°C to +65°C -10°C to +55°C	
- Humidity		95% r. H. non cond.	

Further technical data:

Performance data:

CPU: Marvell (Intel)
 PXA 270, 312 MHz
 (520MHz as Option)
 SDRAM: 64 MB
 FLASH: 32 MB

Power supply requirements:

Basic: 3 W typ. (+10 to +30 VDC)
 GSM modem: 3 W; 7 W peak
 UMTS/HSDPA modem: 5 W, 10 W peak

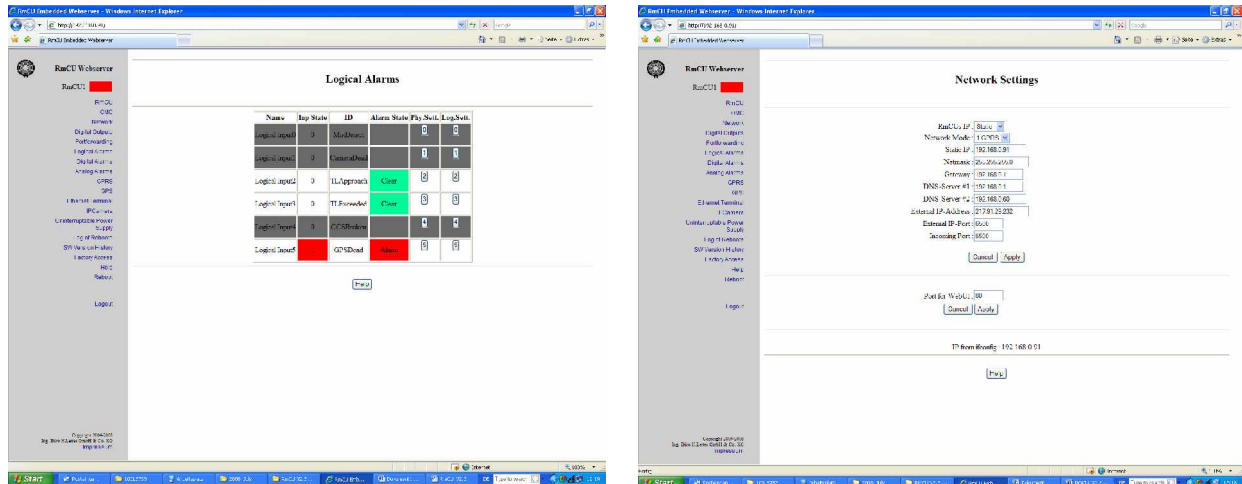
Connectors and LEDs:

- SMA connector (for external antenna)
- LED, indicating state of GSM modem
- LED, indicating state of UMTS modem
- LED, indication power and alarm state
- high pin count connectors for power supply, different IO's and interfaces
- LAN connector
- SIM-Card holder



Local Configuration:

- WEB- interface via USB or Ethernet



OS:

- Linux Kernel 2.6

Special Features:

- Hardware WatchDog for RmCU, and the integrated GSM- Modem,
- internal temperature sensor
- internal EEPROM for serial number, SW licence and version
- internal real time clock with battery buffer

Options:

- Fully integrated Siemens MC55i or HC25 supporting:
 - GSM: GSM850/900/1800/1900
 - GSM-R
 - UMTS/HSDPA: GSM850/1900/2100 (only HC25)
- Up to 8 analog Inputs in 12 Bit resolution with selectable measuring range (0 to 2 V, 0 to 5 V, 0 to 10 V, 0 to 20 mA, PT 100/500/1000)
- UPS (external housing)
- GPS- Receiver
- external SIM card holder